

## Lucan Community National School



### Returning to School - What parents need to know August 2022

#### Traffic Management Plan

This traffic management plan is in place to ensure the safety of all our pupils. We as a school community must be particular vigilant with regard to our youngest pupils and our pupils with additional care needs. The school campus is a very busy place during arrival and collection times and you will be aware that we do not have the capacity to cater for all families parking on campus (see below). Thank you for your cooperation. Please forward/pass on this information to your designated 'drop-off/collection' person for your child if it is not yourself.

- Walking/cycling to/from school strongly encouraged.
- Arrangements for locking bicycles in the bike shed – **Morning time** (if pupils need assistance in locking bicycle, parent/guardian enters and exits through **Gate B**. Afternoon time (if pupils need assistance unlocking bicycle, parent/guardian enters and exits through Gate C (see maps below). The school cannot accept responsibility for bicycles/scooters etc stolen/lost/damaged etc on school property. Note: Bicycles/scooters etc can only be stored in the bike shed. Motorised scooters cannot be stored on school premises.

#### DRIVING TO THE SCHOOL

- **Parents with children in Junior Infants, Senior Infants, First Class, CSE ONLY to drive beyond main gate** (parking on main road or in other nearby parking areas preferable if possible).
- Parents of Second, Third, Fourth, Fifth and Sixth Class pupils (with no children in younger classes) driving to school to park on main road or other nearby parking areas and walk in through main gate (or other entrance onto the school campus).
- Parking **strictly in set down areas**. Drop-and-go system in place inside main gates (Junior Infants, Senior Infants, 1<sup>st</sup> Class, CSE). Parents drop children to assigned gates and leave immediately to allow for next arrivals. Strictly no U-turns on the road inside main gates. Cars facing the roundabout direction must turn at roundabout. Please [Click here](#) for video.
- Pupils (as age appropriate) encouraged to make own way from car/campus entrance gates to assigned school entrance gate.

## Starting Times

In an effort to limit the number of people waiting in the school grounds in the morning, we are bringing the children into school in alphabetical order.

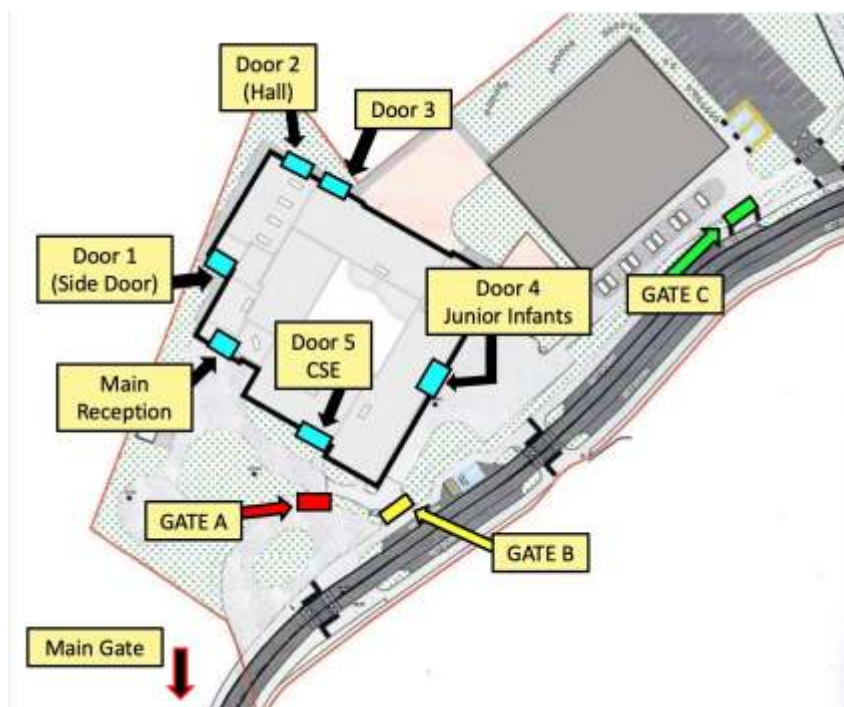
8.15-8.20am: If your child's surname begins with **A-F**

8.20-8.25am: If your child's surname begins with **G-M**

8.25-8.30am: If your child's surname begins with **N-Z**

## Allocated Gates - Pupil Entry – Morning Time

Pupils will be dropped by parent or walk independently to their class allocated gate. Pupils will make their way from their gate into the school and to their classroom assisted by staff. No parents/guardians (Senior Infants to Sixth Class) may proceed beyond gates.



### **CSE classes (M. Róisín Cartwright & M. Cora Howe)**

Pupil entry arrangements – Parent and pupil enter through **Gate B** to Door 5 for drop-off.

### **Junior Infants A (M. Ashley White) & Junior Infants B (M. Sarah McLoughlin)**

Pupil entry arrangements – Parent and pupil enter through **Gate B** to Door 4 for drop-off.



**Senior Infants A (M. Áine McGinn), Senior Infants B (M. Ciara Brady); First Class A (M. Ailbhe McGauran) & First Class B (M. Saoirse Knauer); Second Class A (M. Ellen Bolton) & Second Class B (M. Ríona Delaney)**

Pupil entry arrangements – Parent drops pupil to **Gate C**. Pupils will be directed through yard by staff to Door 3 (see main map above).

**Third Class A (M. Laura Duff) & Third Class B (M. Chris Grehan); Fourth Class A (M. Emma Ramsay) & Fourth Class B (M. Sarah Caldwell); Fifth Class (M. Laura Harrison) & Sixth Class (M. Aisling O’Sullivan)**

Pupil entry arrangements – Pupils arrive to **Gate A**. Pupils will be directed by staff to Door 1 (see main map).

**Pupils who arrive late after 8.30am must enter through Gate A and enter through the main reception door where they will be met by staff, signed in, and brought to their classroom.**

**Please note:**

- Due to limited parking/set down areas parents/guardians are asked not to congregate in groups on the school campus at drop off times. Please leave promptly once your child is dropped off in the morning.
- We ask for your co-operation on being punctual for start times to minimise congregation at entry points. This will ensure that our entrances are not overcrowded at any time and that there is a constant stream of children entering the school building in a safe manner. There will be teachers supervising the pupils to ensure they know where they are going. Lessons begin at 8:30am, teachers will be in classrooms to supervise pupils from 8.15am.
- Please be aware that the same procedures will be in place for rainy/wet days.

### **Home Time – Collection Times**

#### **CSE classes:**

Junior Day Collection (1.10pm) & Senior Day Collection (2.10pm).

#### **Junior Infants:**

For Junior Infants only: Collection time Thursday 1<sup>st</sup> September to Friday 9<sup>th</sup> September: 10.30am

For Junior Infants only: Collection time Monday 12<sup>th</sup> September to Friday 16<sup>th</sup> September: 11.30am

For Junior Infants only: Normal collection time (from Monday 19<sup>th</sup> September): **1.10pm**

#### **Senior Infants:**

Collection time: 1.10pm daily

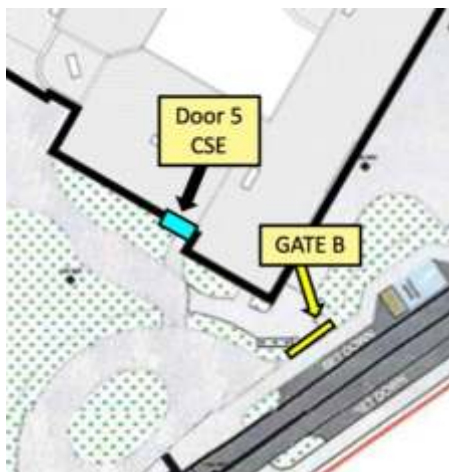
#### **First Class to Sixth Class**

Collection time: **2.10pm**

## Home Time – Collection Arrangements

### CSE classes (M. Róisín Cartwright & M. Cora Howe)

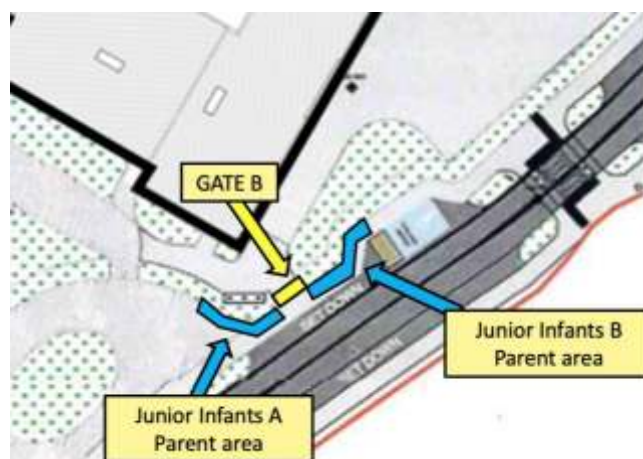
Same arrangements as morning time arrival. Parent enters through Gate B to CSE door for collection.



### Junior Infants A (M. Ashley White) & Junior Infants B (M. Sarah McLoughlin)

**\*\*GATE B\*\***

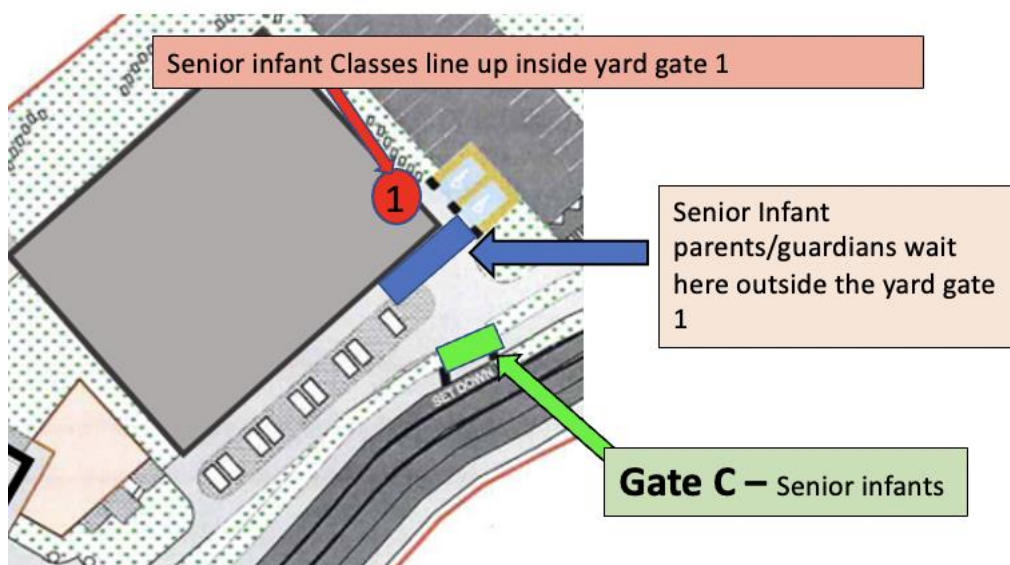
Parents/Guardians line up outside the black railings and classes will line up along the inside. Please do not call out to children or beckon them at home time. It is extremely important that the teacher sees who each pupil is going to for safe handover. Teachers are working as efficiently as they can. We appreciate your patience.



### Senior Infants A (M. Áine McGinn), Senior Infants B (M. Ciara Brady)

**\*\*GATE C\*\***

Parents/Guardians enter/exit through Gate C and wait outside yard gate 1 for pupils to be handed over (see map below).



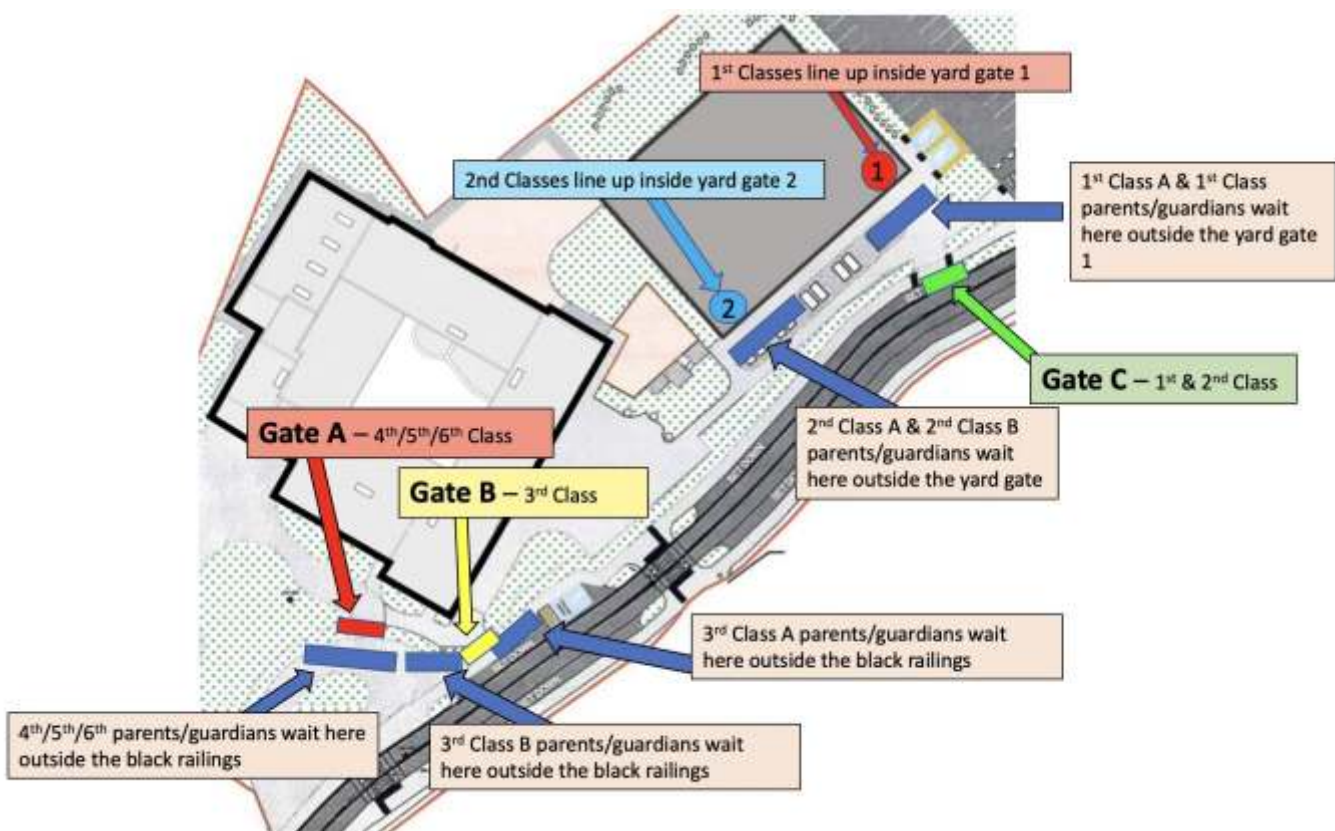
## 1<sup>st</sup> Class to 6<sup>th</sup> Class Collection Arrangements

**First Class:** Parents/Guardians enter/exit through **Gate C** and wait outside yard gate 1 for pupils to be handed over (see map below).

**Second Class:** Parents/Guardians enter/exit through **Gate C** and wait outside yard gate 2 for pupils to be handed over (see map below).

**Third Class:** Parents/Guardians wait outside **Gate B** (see locations on map below) for pupils to be handed over

**Fourth, Fifth & Sixth Class:** Parents/Guardians wait outside **Gate A** at home time. Pupils will exit through Gate A.



### Please Note:

- Please do not call out to children or beckon them at home time. It is extremely important that the teacher sees who each pupil is going to for safe handover. Teachers are working as efficiently as they can. We appreciate your patience.
- Teachers are aware that some parents/guardians will be collecting children from more than one gate. Teachers will wait with pupils at/near designated class gate until all children are collected.
- Given the size of our school now (c. 250 families) we ask that Parents/Guardians do not congregate in groups or stand around chatting at the collection gates at collection times, to allow for teachers to see parents/guardians/designated collection person and for pupils to exit safely.